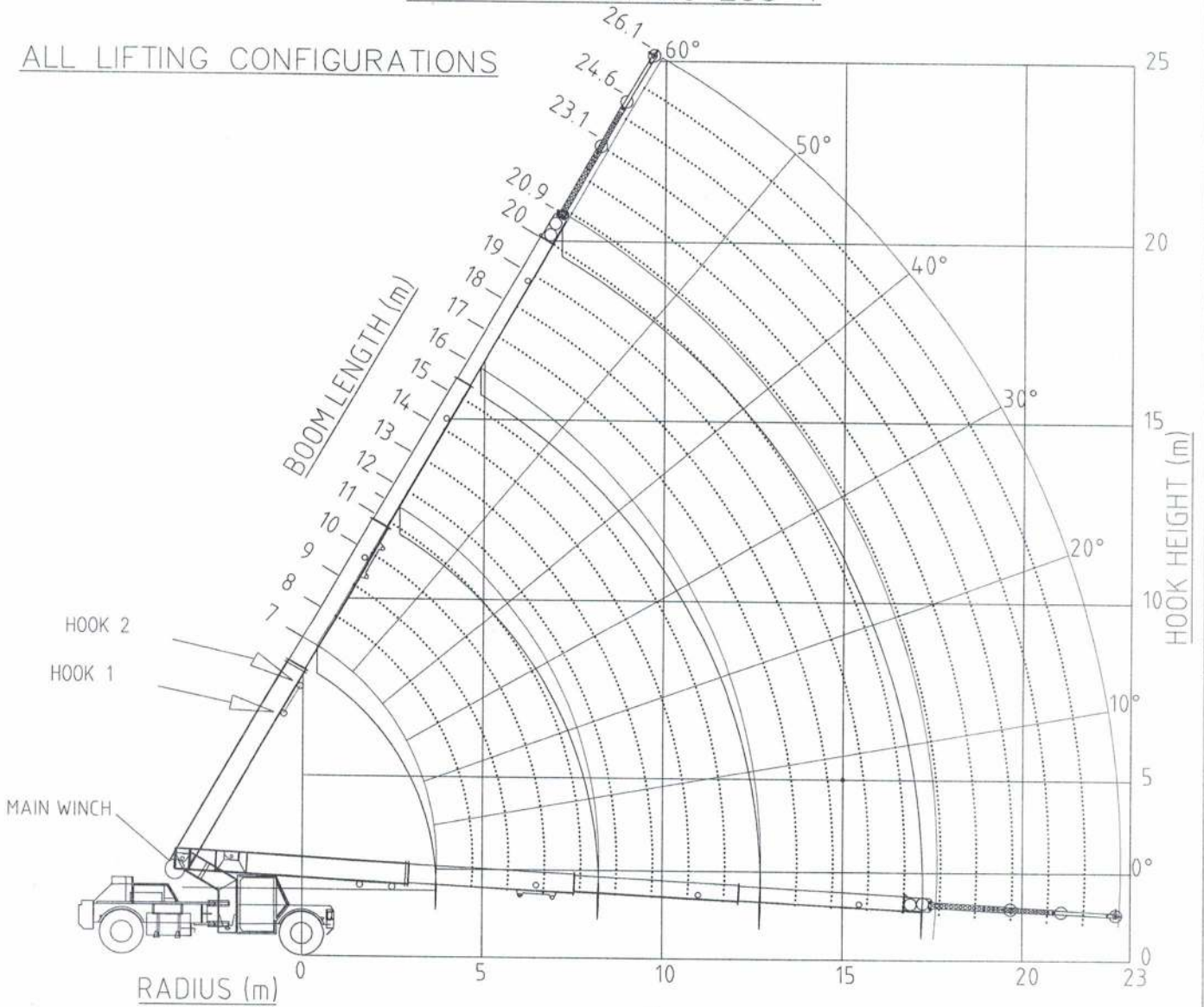




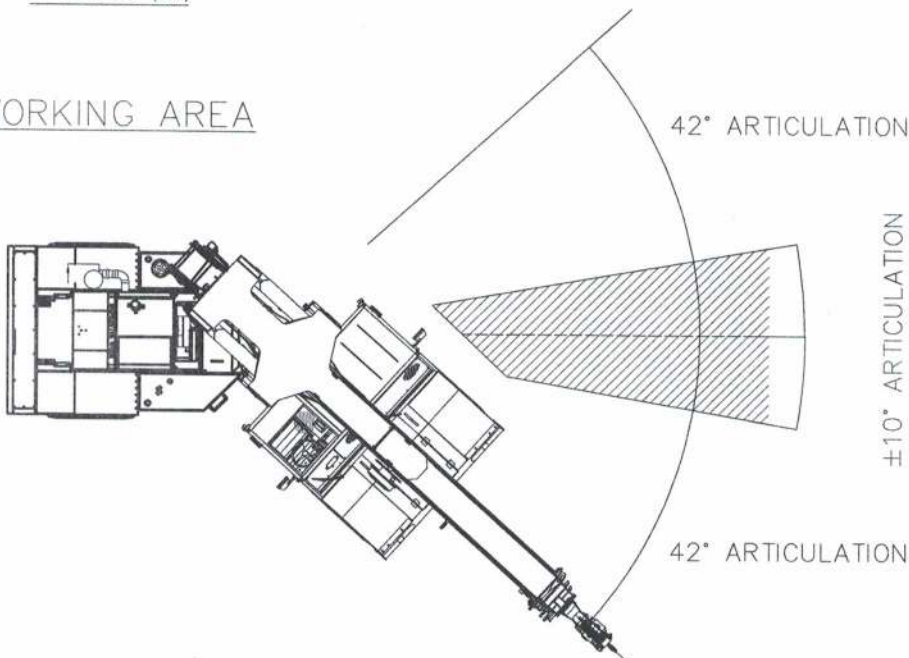
RC20-20 MOBILE CRANE

RANGE CHART No 253-1

ALL LIFTING CONFIGURATIONS



WORKING AREA



**RATED CAPACITIES ON MAIN WINCH ROPE (Kilograms)
+/- 42° ARTICULATION**

		Boom Length (Metres)														
		7	8	9	10	11	12	13	14	15	16	17	18	19	20	20.5
Radius (Metres)	1.6	16000	16000	16000												
	2.0	15000	15000	15000	15000											
	2.5	14500	14000	13500	13400	13200										
	3.0	11400	11250	11000	10900	10800	10800									
	3.5	9500	9450	9250	9150	9050	9050	9150								
	4.0		8100	7950	7800	7700	7700	7800	7900							
	4.5		7050	6900	6800	6650	6700	6800	6850	7000						
	5.0			6050	5950	5850	5900	5950	6050	6100	6150					
	6.0				4700	4600	4600	4700	4800	4850	4900	4950	5000			
	7.0					3700	3750	3800	3900	3950	4000	4050	4100	4100	4000	3900
	8.0						3100	3150	3200	3300	3350	3400	3400	3450	3500	3500
	9.0							2650	2700	2750	2800	2850	2900	2950	2950	3000
	10.0								2300	2350	2400	2450	2450	2500	2550	2550
	11.0									2000	2050	2100	2100	2150	2200	2200
	12.0										1750	1800	1850	1850	1900	1900
	13.0											1550	1600	1650	1650	1650
	14.0												1400	1400	1450	1450
15.0														1250	1300	
16.0															1100	
17.0															1050	
17.2															1050	

NOTES

- DESIGNED TO MEET AS1418.5, AS1418.1 & AS3990
- AREA ENCLOSED WITH SOLID LINE DENOTES STRUCTURAL LIMITATIONS. ALL OTHER RATED CAPACITIES DO NOT EXCEED 66.7% OF TIPPING LOADS
- LIFT AND CARRY ON FIRM LEVEL GROUND. LOAD MUST BE CARRIED ON THE SHORTEST POSSIBLE BOOM AND CLOSE TO THE GROUND. MAXIMUM CRANE SPEED WHEN LOADED = 3KM/HR
- HOIST ROPES
WINCH CAPACITY 1,2,3, LAY = 4000KG
WIRE ROPE = Ø16MM
MIN BREAKING STRENGTH = 168 KN
TOTAL WIRE ROPE LENGTH = 100M
CONST. = 1770 GRADE 6x25 IWRC
- WEIGHT OF SLINGS, HOOKS AND HOOK BLOCKS TO BE ADDED TO THE LOAD
- WEIGHT OF FLY-JIB TO BE ADDED TO THE LOAD IF INSTALLED BUT NOT USED
- TYRES
FRONT = 12.00x20x20 PLY INFLATED TO 828 kPa (120 PSI)
REAR = 12.00x20x20 PLY INFLATED TO 690 kPa (100 PSI)

LIFTING ACCESSORIES WEIGHTS

(THESE WEIGHTS ONLY APPLY TO CONSTRUCT ENGINEERING SUPPLIED LIFTING EQUIPMENT)

- 4 FALL HOOK BLOCK = 104 KG
- 4 FALL HOOK BLOCK HOOK = 23 KG
- SINGLE FALL HOOK BLOCK = 42 KG
- SINGLE FALL HOOK BLOCK HOOK = 2KG
- INSTALLED UNUSED FLY-JIB = 150 KG

WINCH LOAD CHART

ROPE FALLS	WINCH LOAD (KG)
1	4,000
2	8,000
4	16,000